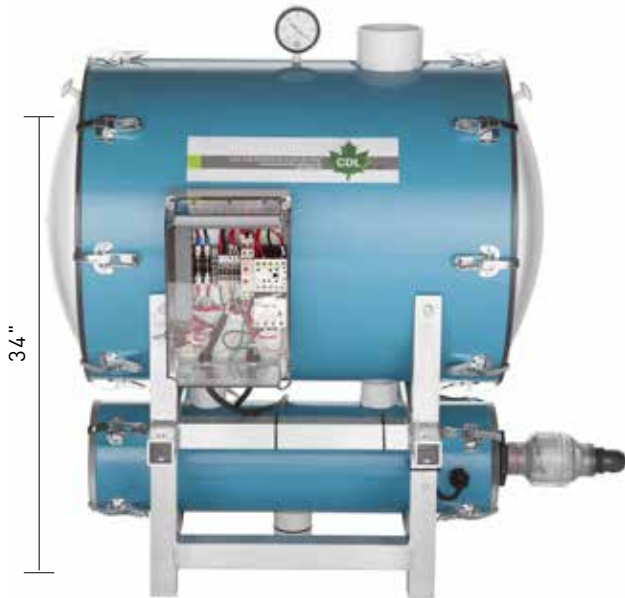


EXTRACTORS WITH SUBMERSIBLE PUMP

Perfect for
HIGH VACUUM

HORIZONTAL EXTRACTORS WITH SUBMERSIBLE PUMP TANK DESIGN

The specified measurement is the distance between the base of the extractor and the center of water entry.



Can be installed on a **tank**
or on the **ground**.

18" x 24"	2024ES	½ HP
18" x 36"	2024ES2	2 HP

Pressure gauge not included

Prices available upon request



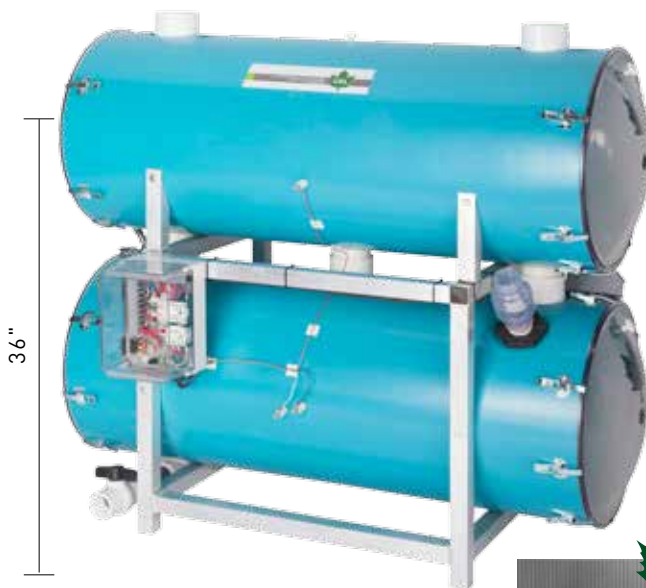
ADVANTAGES

- > No sap-return in the 5/16" tubing.
- > High quality submersible pump.
- > Can be installed on a tank to allow drainage by gravity during shutdown periods.
- > No air in the tubing system while extracting sap.
- > Solves the sap extraction problems caused by pumping at high vacuum.
- > No float, extremely reliable.



HORIZONTAL EXTRACTORS WITH SUBMERSIBLE PUMP

The specified measurement is the distance between the base of the extractor and the center of water entry.



18" x 48"	204820ES	½ HP
18" x 48"	204820ES2	2 HP
18" x 48"	204820ES2D	2 x 2 HP
18" x 60"	206020ES3	3 x 2 HP
18" x 60"	206020ES4	4 x 2 HP

A	Extractor grid kit	7200082A	48"
A	Extractor grid kit	7200083A	60"

Pressure gauge not included

Prices available upon request

ADVANTAGES

- > No sap-return in the 5/16" tubing.
- > High quality submersible pump.
- > No air in the tubing system while extracting sap.
- > Solves the sap extraction problems caused by pumping at high vacuum.
- > No float, extremely reliable.



A



Extractor grid



EXTRACTORS WITH SUBMERSIBLE PUMP

LOW HORIZONTAL EXTRACTORS

The specified measurement is the distance between the base of the extractor and the center of water entry.



22"



ADVANTAGES

- > Very low (**only 24" from the ground**)
- > No sap-return in the 5/16".
- > High quality submersible pump.
- > No air in the tubing system while extracting sap.
- > Solves the sap extraction problems caused by pumping at high vacuum.



18" x 36"	1836ES	1/2 HP
18" x 36"	1836ES15	1 1/2 HP
18" x 48"	2048ES2	2 HP
18" x 48"	2048ES2D	2 x 2 HP

Submersible conversion kit



0.5HP 240V 1PH Submersible conversion kit	0624ES
0.5HP 240V 1PH Submersible conversion kit <i>Without probe</i>	0624ESSC
0.5HP 240V 1PH Submersible conversion kit <i>With probe</i>	0624ESAS
2.0HP 240V 1PH Conversion set	0640ES2
2.0HP 240V 1PH Submersible conversion kit <i>With probe</i>	0640ES2SC
2.0HP 240V 1PH Submersible conversion kit <i>With probe</i>	0640ES2AS

Pressure gauge not included

Prices available upon request

VERTICAL EXTRACTORS WITH SUBMERSIBLE PUMP

The specified measurement is the distance between the base of the extractor and the center of water entry.



41.5" without manifold
46.5" with manifold



ADVANTAGES

- > Opening on top for easy cleaning.
- > No sap-return in the 5/16" tubing.
- > High quality submersible pump.
- > No float, extremely reliable.
- > No air in the tubing system while extracting sap.
- > Solves the sap extraction problems caused by pumping at high vacuum.



	Without manifold	With manifold	
18" x 40"	2036ES	203608ES	1/2 HP
18" x 40"	2036ES2 <i>With converter</i>	203608ES2	1 1/2 HP
18" x 40"	2036ESD	203608ESD	2 x 1/2 HP
18" x 40"	2036ES2D <i>With converter</i>	203608ES2D	2 x 1 1/2 HP

Pressure gauge not included

Prices available upon request