

EXTRACTORS

SELF-CLEANING EXTRACTORS

OUR EXTRACTORS ARE NOW AVAILABLE WITH A SPRINKLER FOR SELF-CLEANING!



SELF-CLEANING EXTRACTORS KITS MAY ALSO BE INSTALLED ON YOUR EXISTING EXTRACTORS!*

72000200

* Requires external pump and plumbing (not included). Contact us for details!



360° CLEANING EFFICIENCY



VARIABLE SPEED EXTRACTOR

ADVANTAGES

- Continuous sap evacuation;
- Progressive pump start;
- Progressive pump stop;
- Minimizes amperage peaks;
- Stays clean;
- Continuous action.





EXTRACTORS WITH SUBMERSIBLE PUMP

WE ARE PROUD TO DESIGN AND MANUFACTURE OUR EQUIPMENT IN OUR OWN FACILITIES!



HORIZONTAL EXTRACTORS WITH SUBMERSIBLE PUMP

OFTEN COPIED NEVER EQUALLED!



The specified measurement is the distance between the base of the extractor and the center of water entry.

ADVANTAGES

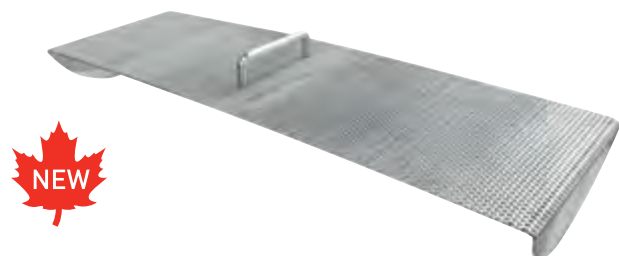
- No sap-return in the 5/16" tubing;
- High quality submersible pump;
- No air in the tubing system while extracting sap;
- Solves the sap extraction problems caused by pumping at high vacuum;
- No float, extremely reliable.

18" x 48"	204820ES	½ HP
18" x 48"	204820ES2	2 HP
18" x 48" ⚡	204820ES2LP	1 x 2 HP Low pressure
18" x 48" ⚡	204820ES2D	2 x 2 HP
18" x 48" ⚡	204820ES2DLP	2 x 2 HP Low pressure
18" x 60" ⚡	206020ES3	3 x 2 HP
18" x 60" ⚡	206020ES3LP	3 x 2 HP Low pressure
18" x 60" ⚡	206020ES4	4 x 2 HP
18" x 60" ⚡	206020ES4LP	4 x 2 HP Low pressure

Pressure gauge not included

Prices available upon request

⚡ : AVAILABLE IN 3 PHASES 208V, 460V ET 575V.



Extractor grid kit	48"	7200082A
Extractor grid kit	60"	7200083A









45

EXTRACTORS WITH SUBMERSIBLE PUMP

LOW HORIZONTAL EXTRACTORS

The specified measurement is the distance between the base of the extractor and the center of water entry.



12" x 24" 	1224ES	1 x ½ HP
18" x 36"	1836ES	½ HP
18" x 36" 	1836ES15	1 ½ HP
18" x 48" 	2048ES2	2 HP
18" x 48" 	2048ES2LP	1 x 2 HP Low pressure
18" x 48" 	2048ES2D	2 x 2 HP
18" x 48" 	2048ES2DLP	2 x 2 HP Low pressure

Pressure gauge not included

Prices available upon request

 : AVAILABLE IN 3 PHASES 208V, 460V ET 575V.



ADVANTAGES

- Very low (only 24" from the ground);
- No sap-return in the 5/16";
- High quality submersible pump;
- No air in the tubing system while extracting sap;
- Solves the sap extraction problems caused by pumping at high vacuum.



1224ES

Ideal for 0 up to 1000 taps at 29Hg.




120V

Submersible conversion kits available.

VERTICAL EXTRACTORS WITH SUBMERSIBLE PUMP

The specified measurement is the distance between the base of the extractor and the center of water entry.



ADVANTAGES

- Opening on top for easy cleaning;
- No sap-return in the 5/16" tubing;
- High quality submersible pump;
- No float, extremely reliable;
- No air in the tubing system while extracting sap;
- Solves the sap extraction problems caused by pumping at high vacuum.



		Without manifold	With manifold
18" x 40"	½ HP	2036ES	203608ES
18" x 40"	1 ½ HP	2036ES2 With converter	203608ES2
18" x 40"	2 x ½ HP	2036ESD	203608ESD
18" x 40"	2 x 1 ½ HP	2036ES2D With converter	203608ES2D

Pressure gauge not included

Prices available upon request

MECHANICAL EXTRACTORS

The specified measurement is the distance between the base of the extractor and the center of water entry.



12" x 12"

121208

4 1/2" openings

750 taps



21"

12" x 18"

121808

4 1/2" openings
2 1" openings

3 000 taps



20"

12" x 24"

122408

8 1/2" openings

4 000 taps



Measures can vary depending on model



ADVANTAGES

- Quick evacuation of the sap;
- No-maintenance mechanism;
- Stainless steel fleet;

- Openings at both extremities to ease cleaning;
- Non bonded, dismountable cylinder.

18" x 24"

202608

Measure: 26"

6 000 taps

8 1/2" openings

18" x 24"

202612

Measure: 28"

12 000 taps

8 1/2" openings

18" x 36"

203612

Measure: 28"

20 000 taps

No openings

Pressure gauge not included

Prices are available upon request

ELECTRICAL EXTRACTORS

The specified measurement is the distance between the base of the extractor and the center of water entry.



15"

12" x 18"

No openings

1000 taps

121808ESM



21"

12" x 18"

4 1/2" openings
2 1" openings

1000 taps

121808E



23 1/2"

12" x 24"

4 1" openings

3000 taps

122406E



30"

18" x 24"

8 1/2" openings for the 24"
12 1/2" openings for the 36"

4000 taps

202606E

18" x 36"

203606E

6000 taps

18" x 36"

2 outlet
double float

203606ED

10000 taps

Pressure gauge not included

Prices are available upon request

MOISTURE TRAPS AND VACUUM BOOSTER TANKS

HIGH VACUUM MOISTURE TRAP



Designed for high vacuum, this moisture trap captures water particules in the air that are not normally retained by conventional traps. It offers better protection for your pumps than other models on the market.



CDL 3" high vacuum moisture trap
mechanical/electrical
710607

\$1 195.00



Filtration
union
7106071

Price upon request

MOISTURE TRAPS



A	CDL 2" moisture Trap	6610508	\$210.00
B	CDL 3" moisture Trap	710605	\$325.00
	Electric option	667282	\$61.20

REPAIR PARTS



Snaps D-2000 folded 662641P \$3.25



Hinge and spring kit for extractors 662481 \$12.50

VACUUM PROTECTION VALVE



668411
Price upon request

The vacuum protection valve safely prevents sap overflow in your moisture trap or your vacuum pump without shutting vacuum down.

VACUUM BOOSTER TANKS THICK WALL



Pressure gauge included



Pressure gauge included

HORIZONTAL

6" x 18"	721806	\$225.00
6" x 24"	722406	\$235.00
8" x 18"	721808	\$235.00
8" x 24"	722408	\$250.00
12" x 18"	721812	\$295.00
12" x 24"	722412	\$365.00
12" x 36"	723612	\$405.00
12" x 48"	724812	\$445.00
18" x 24"	722418	\$550.00
18" x 36"	723618	\$825.00

VERTICAL

6" x 18"	720618	\$190.00
8" x 18"	720818	\$205.00
12" x 18"	721218	\$285.00
12" x 24"	721224	\$300.00
12" x 36"	721236	\$345.00

SAP LIFTERS



Simple sap filter	300 taps	73015
Double sap filter	600 taps	73017
Triple sap filter	1 200 taps	73018

Ask our experts to drill additional holes at low cost.