

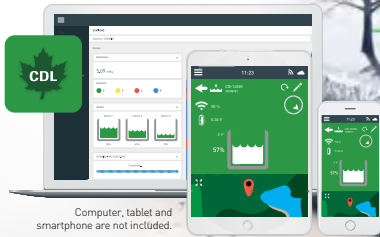


MONITORING STARTER KIT FOR SMALL PRODUCERS

21090-EN

KIT INCLUDES:

- 5 SINGLE VACUUM SENSORS
- 1 GATEWAY
- 1 CONTROLLER (MINI-PC)
- 1 HD MONITORING SCREEN
- 1 WIRELESS MOUSE + KEYBOARD



Computer, tablet and smartphone are not included.



TAKE CONTROL OF YOUR SUGARBUSH AND HAVE ACCESS TO YOUR DATA EVERYWHERE AND IN REAL TIME WITH CDL.



MONITORING EQUIPMENT

| | | |
|----------|---|-----------|
| | Vacuum sensor (single) | SE100-V |
| A | Vacuum sensor (double) | SE100-V-2 |
| | Communication gateway V2 | SG100-V2 |
| B | CDL control base | 21082A |
| | Tank level sensor | SA100-HT |
| C | Tank level sensor holder | 21120 |
| D | Digital HD camera IP20X 120M | 20200 |
| E | Qi wireless charger and AC/DC adaptor PG200 Assy | 22201A |
| F | Membrane switch SE100-V | 21007 |
| G | Multifunction controller (in/out) <i>New and ultra-compact design. Works with Wisemesh only.</i> | SE200-M2 |
| H | Tank level sensor kit <i>Allow automatic control of pressure pump.</i> | 66551 |
| I | Transfo AC/DC adaptator 5V 2 amp | 21005 |





MONITORING



VACUUM REGULATING MODULATING VALVE

CDL MONITORING SYSTEM OPTION FOR REMOTE VACUUM MODULATION

668409
\$285.00



ADVANTAGES :

- Improve vacuum management to prevent premature mainline freezing when temperature are close to 0 degrees C;
- Energy saving when the system is frozen or during the night when the sap is running very little;
- Better vacuum management. Can allow quicker sap flow at the beginning of the day for systems that are not tight.

Vacuum regulator and plumbing not included.

PORTABLE GATEWAY (SNIFFER)

MONITORING DEVICE DESIGNED TO KEEP TRACK OF EMPLOYEES IN FORESTS.

Portable gateway (sniffer)
Works with Wisemesh only.

PG200

- Allows employees working on leaks to access, with their phones, to all the data from the vacuum sensors (temperature, vacuum level and more) even if there is no cellular signal.
- The CDL interface allows the manager to assign a sniffer to each worker or team to record time and movement history for each one.

Very fast batteries charging (maximum 3 hours)
Over than 12 hours autonomy



MOTORIZED VALVE



| | |
|---|---------|
| Motorized valve 120V ON/OFF 2" ferrule | 668408S |
| Motorized valve 120V ON/OFF 2" ferrule | 668409S |
| Motorized valve 120V ON/OFF 2½" ferrule | 668410S |
| Motorized valve 120V ON/OFF 3" ferrule | 668411S |

COMMUNICATION MODULE

Monitoring option that can be added to a LENZE phase converter to modulate the RPM of vacuum pumps.

Ethernet communication module for LENZE drive
21206

