



The CDL way.  
The power of expertise.

## TECHNICAL INSTRUCTIONS FOR MAKING THE LABELS

---

### BLEED AND MARGIN REQUIREMENTS

Since cutting cannot be guaranteed to be exactly in the same place for a large quantity of print products, you must stretch the background (if there is one) 0.125 inch outside of the trim line on each side (this is called a “bleed”) and place all critical elements (text, images, graphic elements, logos, etc.) 0.125 inch inward on each side from the trim line. Anything left too close to the trim line or outward may be cut. Please refer to our templates for visuals.

### ART RESOLUTION REQUIREMENTS

All artwork, designs and images must be provided in minimum of 300 DPI and CMYK color mode. CDL Maple Sugaring Equipment or his third party printing company are NOT RESPONSIBLE for images printed as fuzzy, distorted or pixilated due to low resolution artwork provided by the customer, especially if it is approved by the customer already. We are also not responsible for any color shift that occurs in conversions from RGB to CMYK color modes.

### TEXT SIZE

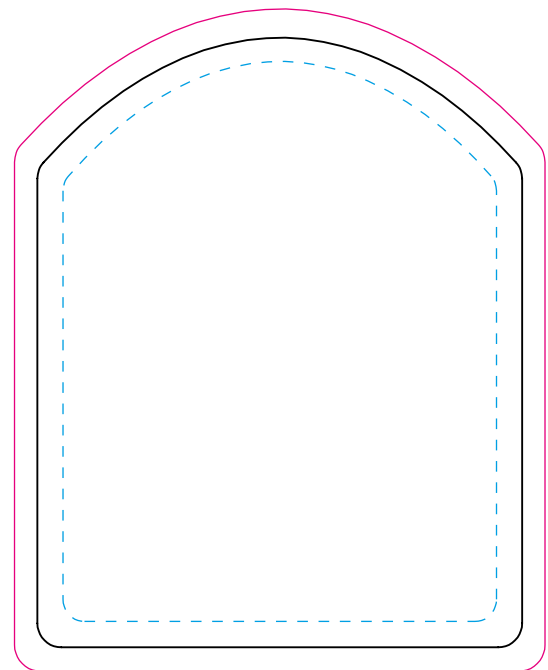
In order to ensure optimal reading quality, please do not use too small a typography. A minimum size of 6 points is recommended for all label formats.

### SENDING FILES

Before submitting the final files, make sure to vectorize all the texts. Then choose File → Package. In the Package dialog box, choose a location to save the packaged file and images. Select options that allow you to collect linked files and put them in the folder along with a copy of the Illustrator file. Provide an appropriate folder name.

Attach to the file a backup of your label in PDF format. Please use the predefined PDF/X-1a:2001 preset.

Larger files can be sent using [wetransfer.com](https://www.wetransfer.com)



bleed

trim line

safety zone