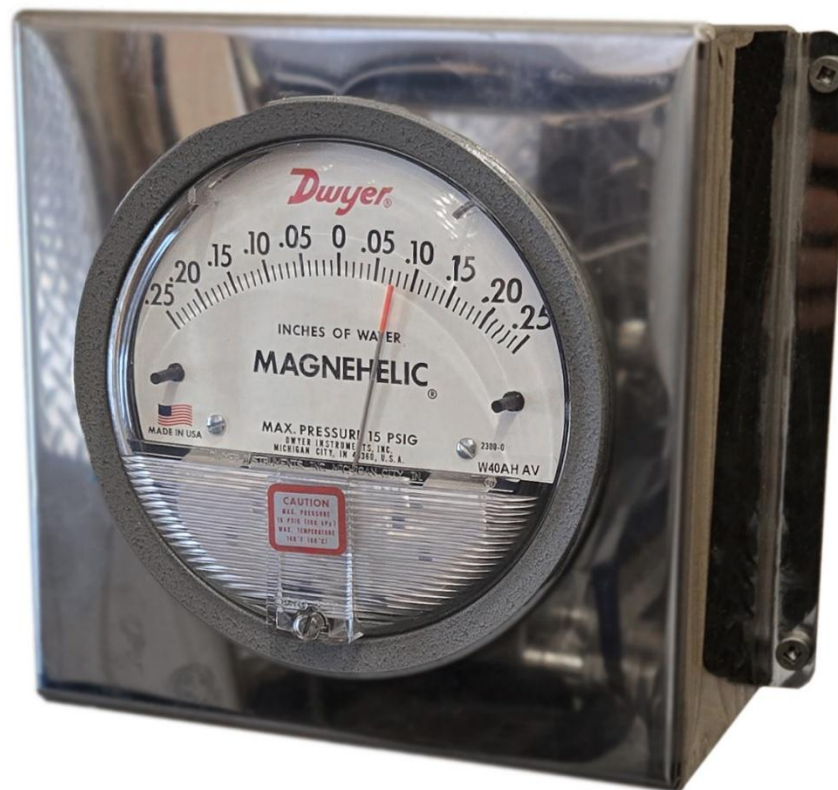




OWNER'S MANUAL

Version 1.1 | 04/07/2026
602300A-MAN-EN

UNIVERSAL MAGNEHELIC SET



Description

The universal magnehelic set is used to monitor the natural draft of a smoke chimney on an evaporator.

The magnehelic probe is installed directly on the stack base. When the probe is installed, the magnehelic set is ready for immediate use. It is then automatically possible to know the draft of the smoke chimney.

Installation

If the option was added to a new evaporator, the installation will have been carried out in the factory.

If the option was purchased separately, the installation will have to be done by the customer himself.

IMPORTANT

1. The magnehelic box must be level to take a good reading. If the needle is not at zero at the start, the reading will be false.

2. In some cases, a smoke stack damper and a "draft control" are present on the machine. It is then important to install the probe between these two elements.

List of tools needed for installation:

- Drill
- 5/16" drill bit
- 1/8" drill bit
- Cutter type pliers
- Measuring tape
- 1/8" riveting pliers

Procedure

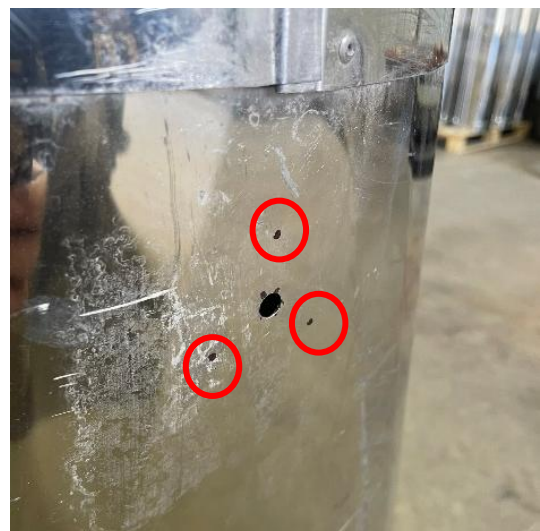
Step 1 - Determine the location of the probe, ideally on the stack base or flue pipe (higher than the damper and lower than the draft control if equipped).



Step 2 - Drill a 5/16" hole in the center of the location.



Step 3 - Using the probe, determine the locations of the 3 1/8" rivets supplied with the kit.



Step 4 - Drill 1/8" holes for the rivets.

Step 5 - Install the probe using the 3 rivets. ***Be careful:**
The probe must be installed so that its tip is positioned as close as possible to the center of the pipe.
The installation orientation may vary depending on the size of the pipe.



Step 6 - Connect the 3/16 rubber tube to the probe.



Step 7 - From the 30' of hose provided, cut a 10" length and install it on the TOP insert behind the magnehelic box. Make sure the hose goes all the way to the outside of the box through the hole provided.



Step 8 - Connect the probe hose to the bottom insert (magnehelic box).



Step 9 - Determine the location of the magnehelic box and secure it with 4 screws in the holes designed for this purpose.



Step 10 - Using the "flat" head screw under the magnehelic needle, ensure the needle is pointing to 0" (evaporator not working and chimney cap closed).

